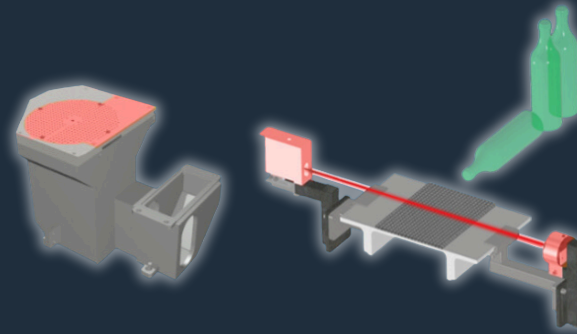


HOT END AUTOMATED SYSTEM



TME
INNOVATION & PERFORMANCE

Foloflame

Laserload

Blankontrol

Rotative take out

Flamemaster

Rotaplate

Valve Controller

Stuck reject



TME ENGINEERING - 28i Rue Denis Papin - 62510 Arques, FRANCE / +33(0) 391 920 491 / tme@tme-engineering.com

TME GLASS AMERICAS - Aurelio Luis Gallardo 470 - 44650 Jalisco Guadalajara, MEXICO / +52 55 7405 4480 / contact@tmeglassamericas.com

FOLOFLAME 1/3

FIRE-POLISH YOUR BOTTLE, WITH HIGH ACCURACY AND VERY LOW DEFORMATION

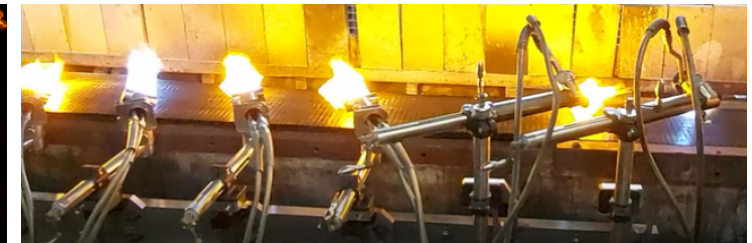
Foloflame contributes to the decarbonisation of industry :

- **60%** energy savings
- Up to **580 tonnes of CO2** saved per line per year
- **No loss of energy** between 2 items
- Superior flame **efficiency**

WITHOUT FOLOFLAME



WITH FOLOFLAME





Why the name "FOLOFLAME" ?

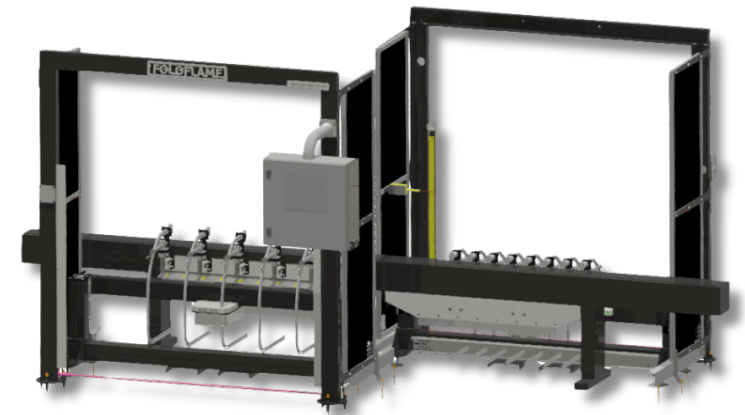
Following Flame



The two fire polishing methods can be compared to a finger passing through a flame:

- **Fixed re-burn**, equivalent to a quick pass over the flame. In this case, the flame remains stationary while the object moves along the conveyor, which limits its effectiveness. 
- **Accompanying** re-burning corresponds to a prolonged passage above the flame. The flame follows the item, increasing its efficiency.. 

\$ RETURN ON INVESTMENT < 1 AN



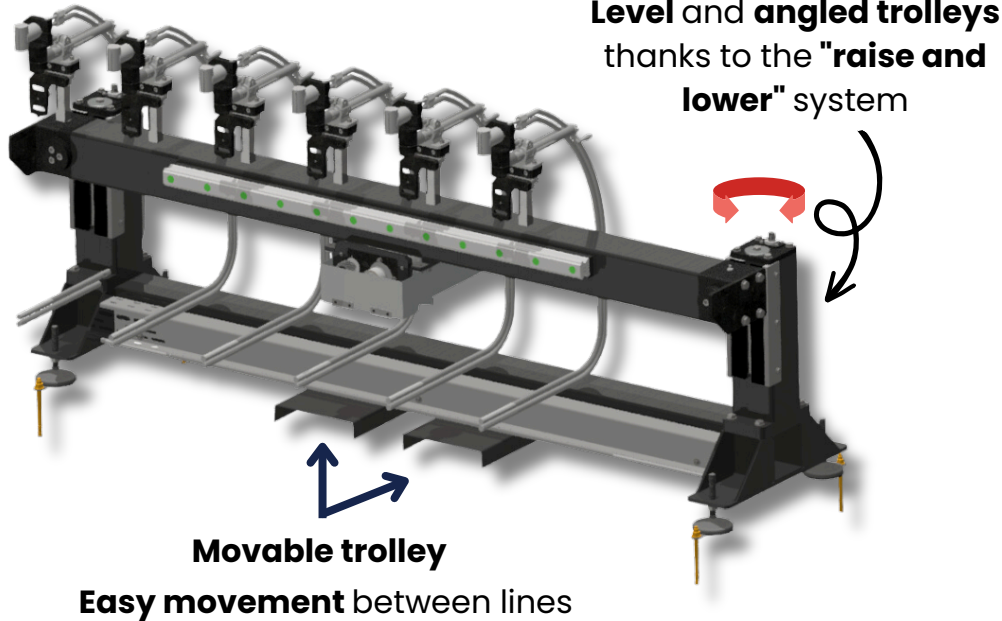
FOLOFLAME 2/3

On field

- ↘ **Reduces** forming defects
- 🎯 **Optimisation** through item tracking
- ✦✦ **High-gloss finish** on items

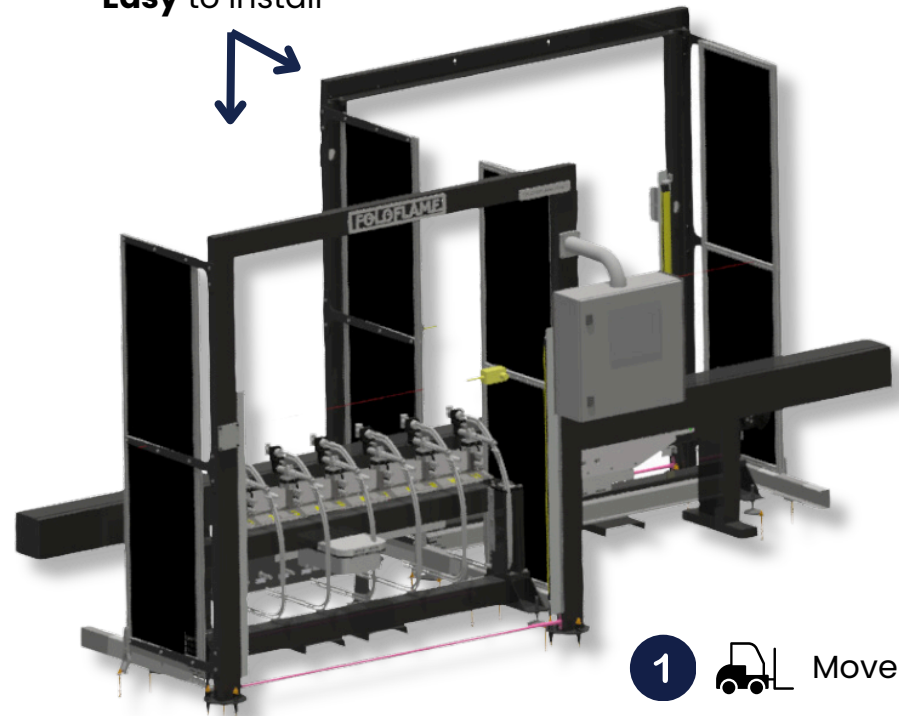
Installation parts

The **two trolleys** are mounted on **both sides of the conveyor**.



The shoes in the chassis allow the trolleys to be movable

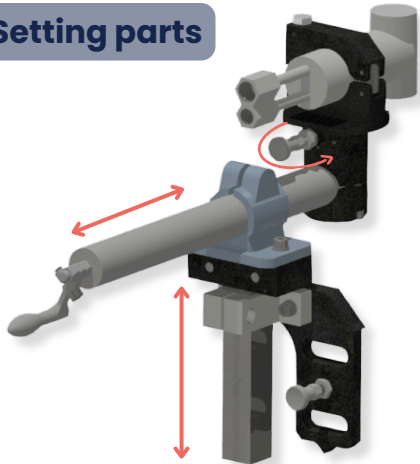
Machine delivered **assembled**
Easy to install



- 1 Move and place it
- 2 Fix it in the floor
- 3 Connect it

FOLOFLAME 3/3

Setting parts



Foloflame is equipped with 2 types of tools :

- Tools for **basic burners**
- Tools for **torch burners**

Mechanical adjustments of rotation, depth, height and angles are made easier (cranks and indexing) to make adjustment quicker and more comfortable. This offers great flexibility for adapting to all types of product.

Our foloflame is equipped with an **"adjustment mode"** that allows access to the work area. The return speed is then lowered so that you can work in complete safety.

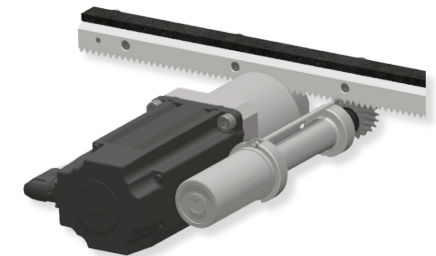
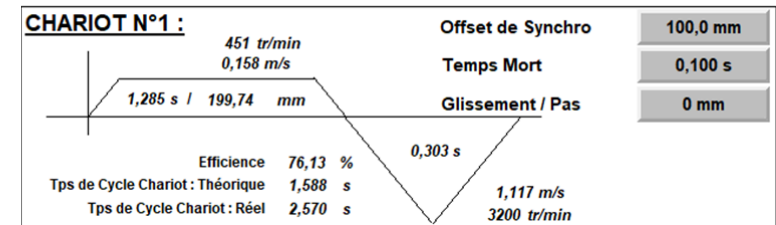
Acceleration parts

In an tracking fire polishing system, there are 2 movements:

- Forward movement to **tracking the product**
- ← Return movement to **return to the starting position**

As this return movement is time **without fire polishing**, it must be as **fast as possible**. In view of the distance, it consists of a very strong **acceleration** and a very strong **deceleration**.

Our system is equipped with a helical drive rack and pinion for the most efficient torque transmission possible.



LASERLOAD

GOB CENTERING SYSTEM FOR YOUR DELIVERY

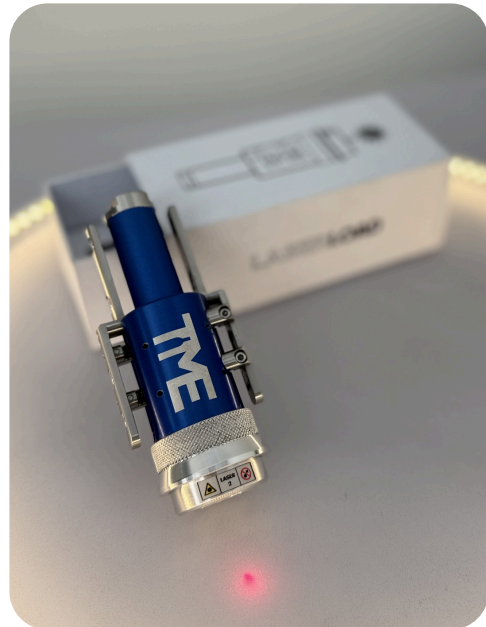


Features

The Situation

In the hollow glass industry, precise drop centering determines the quality of production.

👉 Misalignment? The result: defects, damages, losses.
LASERLOAD is the answer to those challenges.








Our Solution

Laserload is a self-centering tool with an integrated laser, designed to precisely center the glass gob in the mold – no manual adjustments required.

- **Hands-free:** Adjust deflectors without holding the tool
- **Compact and lightweight:** Fits in your pocket
- **Simplified use:** One button to deploy the arms and activate the laser sight

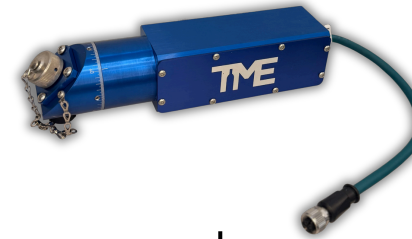


-  **Weight: 300g**
Lightweight, fits in your pocket
-  **Integrated Laser Sight**
Real-time visualization of the gob's trajectory down to the bottom of the mold
-  **Smart Auto-Centering**
Three spring-loaded arms ensure perfect centering with no manual intervention
-  **Zero Manual Adjustment**
Automatic clamping system. Just one simple motion to install
-  **Multi-Size Compatibility**
Fits all standard deflector diameters (from 7/8" to 2 1/4")

Catalogs.

BLANKCONTROL

THE NEW BENCHMARK OF THE IN-PROCESS TEMPERATURE CONTROL

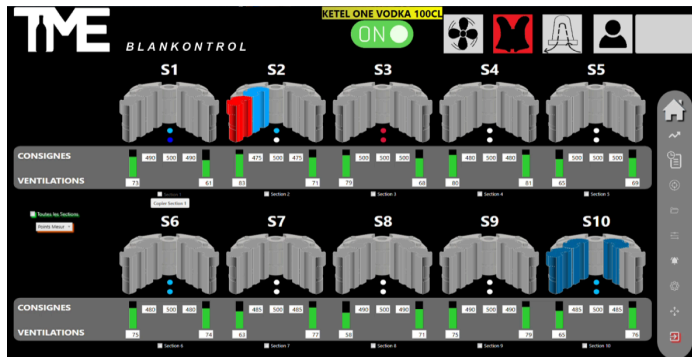


Why BLANKCONTROL?

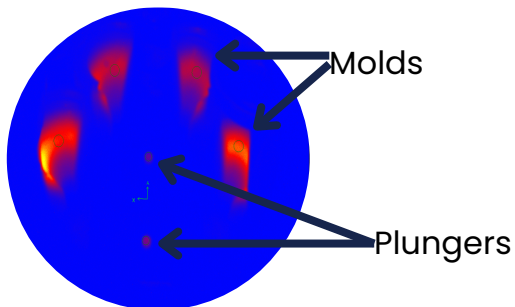
- 🔥 Detection of **overshoots and instant temperature** regulation.
- ⚖️ **Stability** during mold changes, even in critical phases.
- 🛡️ **100%** continuous process control → **guaranteed compliance** for every bottle.
- 👤 Operators freed from manual measurements → less supervision, **greater reliability**.

Our interface

As easy as a video game.
Someone knowing the IS Machine principle can understand without a book.



Thermal image



Direct Benefits

- ✅ **Improved quality** : fewer defects, fewer glass spikes, full process control.
- ⚡ **Increased performance** : rapid stabilization during mold changes, fewer losses, optimized production.
- 🏆♂️ **Glass lightweighting** : optimized weight = less material and reduced costs.
- 💰 **Fast ROI** : profitable investment in less than one year, patented and universal.
- 🔒 **Maximum reliability** : automated measurements, 100% reliable, maintenance-free.

HOT END AUTOMATED

BLANKCONTROL

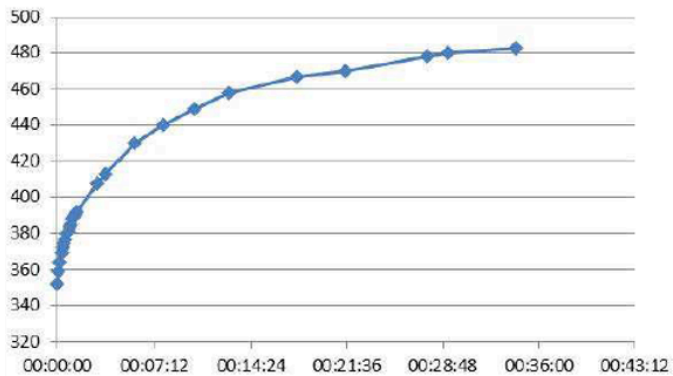
Start section

Installation

Machine placement

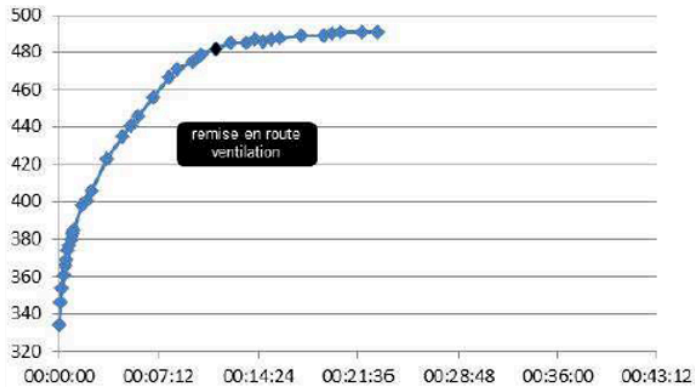
480°C IN 30MN

WITHOUT BLANKCONTROL



480°C IN 10MN

WITH BLANKCONTROL



🔄 Compatible with all machines featuring signal recovery.

🛠️ Zero maintenance: operates without interrupting production.

🔍 Machine analysis: dummy camera used to determine the optimal location.

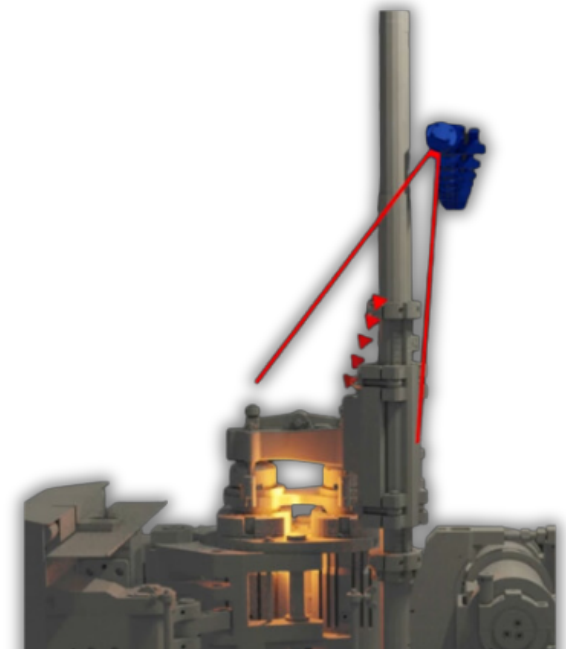


🔧 Blankcontrol is easy to install: prepare the equipment, mount the cameras, connect the cabinet and signals, then start production.

One camera per section for 100% cycle control.

The camera is positioned at the **center of the section** to achieve the **best possible viewing angle.**




We monitor and control the temperatures of the blank **molds** and **plungers.**



ROTAKOUT

TO PRESENT THE SEAMS IN RIGHT POSITION FOR FIRE POLISHING

This system makes it possible to pick up items and place them on the conveyor with a specific orientation. It can be fitted to all arms.

-  Easy to install
-  Smooth rotation
-  Outsourced setting

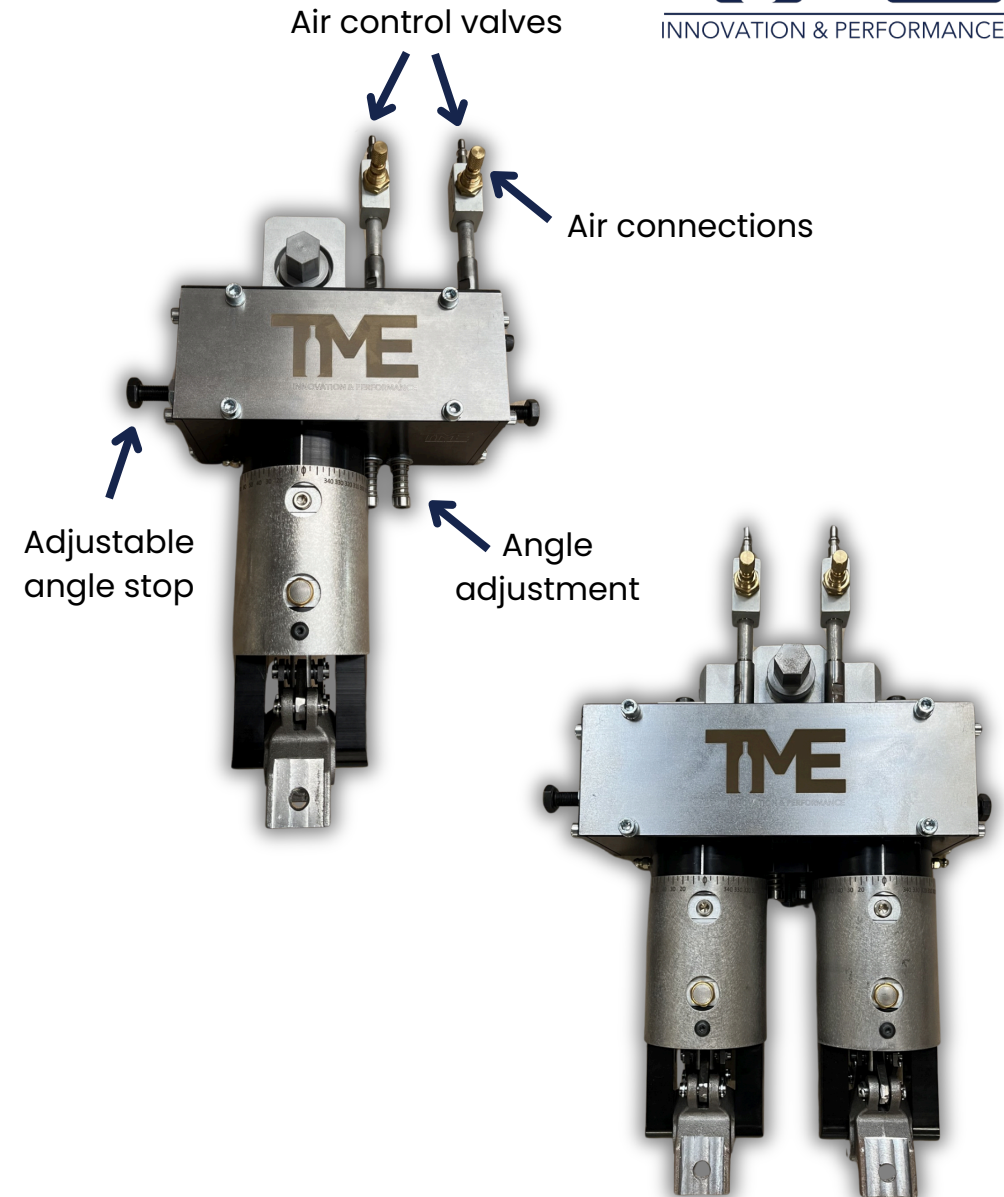
Process

SG / DG



Our range

4"1/4 y 6"1/4



FLAMEMASTER

A MUST HAVE FIREPOLISHING EQUIPMENT

Fire-polish your bottle, with high accuracy and very low deformation.

Some bottles which previously stayed in single gob because of the fire-polishing, switched to double gob.

Our equipment

- **Pressure Regulator** are dome relator
- On **gaz** there are strainer filter and filter for mechanical impurities
- On **Oxygen** there is a strainer filter
- Flowmeters are from **Krohne**
- Safety line: there is an input to **stop automatically** the **Flamemaster** if the conveyor is stopped.

Latest Improvements

- Even **quicker job change** and **set up** times
- **Ergonomic** settings
- **Easier** set up to the height of the conveyor
- Software **improvement** for maintenance

- 👉 Easy to install
- 👉 Easy to run
- ⚙️ Low maintenance



ROTAPLATE

ADDING MORE COOLING TIME ON THE DEAD PLATE

- For the sections **near firepolishing**
- From **1** up to **4** section
- **2, 3, 4 Articles** at a time

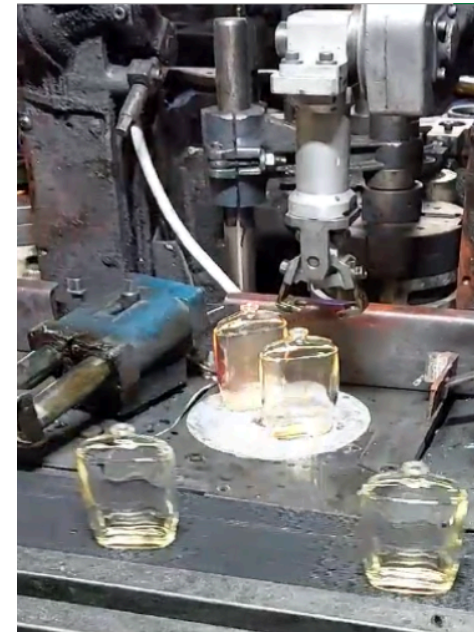
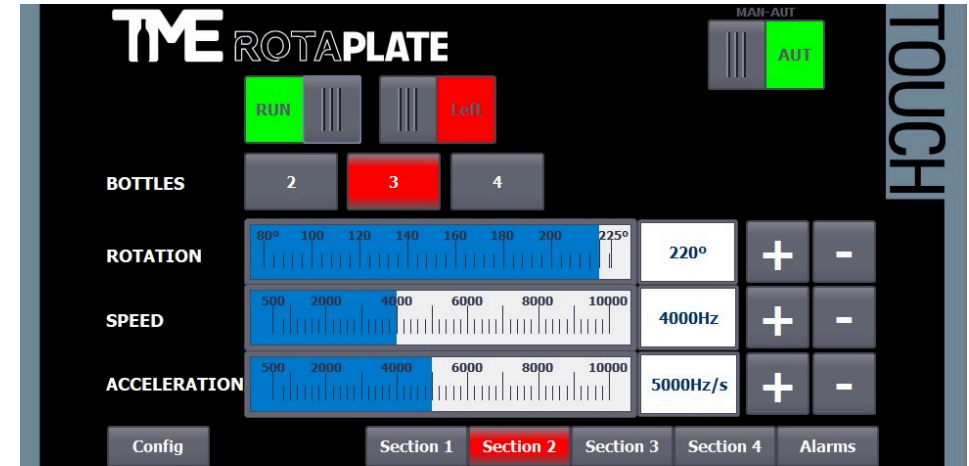
Given the IS Machine is a Linear Machine, when products need to be firepolished, a compromise between 'hot sections' (near the first burner) and 'cold sections' (away from the first burner) **needs to be found**.

The **power of the burner** can result in **dimensional problems** on products due to these "hot sections", or **insufficient polishing** in "cold sections". Occasionally, one or two sections may have to be stopped as a result.

Our solution

ROTAPLATE solves this! Time on the cooling plate is **extended for hot sections** and the temperature of the product when it arrives at the first burner is **equalized**. Up to four products can sit on the cooling plate at any one time.

The setting of ROTAPLATE is **intuitive** and the motoring is **smooth** (without vibrations), thereby allowing work on unstable products. Up to four sections can be equipped on the machine



Catalogs.

VALVE CONTROLLER

UPGRADE YOUR EXISTING MACHINE WITH A PROPORTIONAL VALVE SYSTEM FOR COUNTER-BLOWING AND FORE-BLOWING

- Until **7 levels**
- No overshoot
- **Fine tuning** with the cabinet

We offer a **multi-language** system.

The system allows the operator to set up to **seven different levels** with different pressures.

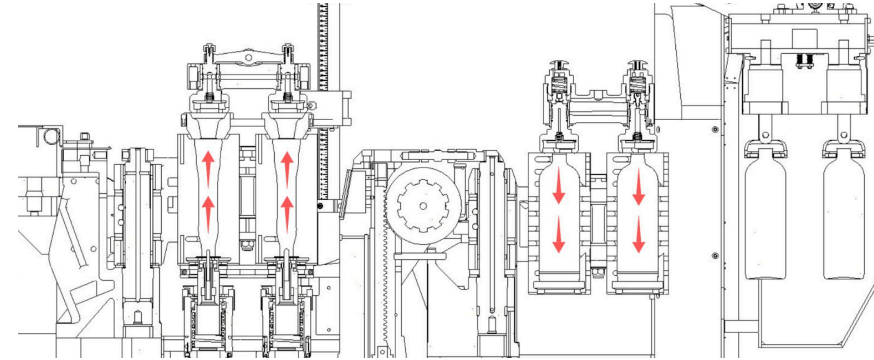
The length of each level can be set in **ms** or **degrees**.

Once one section is set, the parameters **can be duplicated**.

We also set pressure for the little blow after the opening of the blank mold.

The values given by the valve compared to the values entered **can be monitored in real time**.

A pocket may be used to **adjust the time and pressure**.



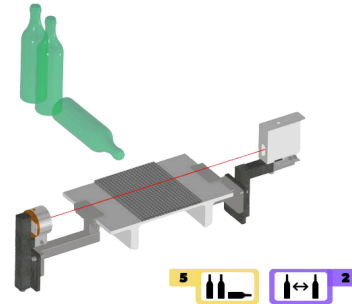
	S1 Pres. pool 500		S2 Pres. pool 500		S3 Pres. pool 500	
	COPIAR		COPIAR		COPIAR	
	Presión	Duración	Presión	Duración	Presión	Duración
Nivel 1	1200	100	1200	100	1200	100
Nivel 2	500	150	500	150	500	150
Nivel 3	0	100	0	100	0	100
Nivel 4	600	125	600	125	600	125
Nivel 5	1000	200	1000	200	1000	200
Nivel 6	500	150	500	150	100	150
Nivel 7	0	100	0	100	0	100
Duración total de niveles	925		925		925	
Duración total soplado prep.	1000		999		1001	

STUCKREJECT

NO STUCK WARE, NO DOWN WARE

Upgrade your machine

- Ejects **fallen & stuck** items
- On the machine **output conveyor**
- Prevents **stuffing** of items



SWR consists of : a **control cabinet** with **touch panel**, one **sensor** plus one **reflector***, **wiring** and one **electro valve***.

*(or two, depending on the chosen option)

We supply supports for **sensors** and **reflectors**, which include **compressed air cooling**.

The speed of the machine can be set by input or manually.

The center distance of bottles can be set.

Bottle width is learnt by the system.

Ejection can be set automatically or manually.



You also have three counters which provide real time information on:

- **Bottles without defects**
- **Fallen or stuck bottles**
- **Bottles that are too close**

You have an **output** that you can use to trigger hot surface treatment.

In the event of power failure, **the system will restart with the same parameters**, but with ejection disactivated.

